

SPECIFICATIONS

CPI / CPM-165

Model	CPI-165		CPI-165R		CPM-165		CPM-165R	
Exterior dimensions(W x D x H)	W625(24.6)×D635(25.0)×H916(36.1) mm(in.) [®]							
Inner Chamber Dimensions(W x D x H)	W510(20.1)×D500(20.0)×H640(25.2) mm(in.)							
Capacity	163L (5.8ft³)							
Exterior	Bonderized Steel Plate with Electrostatic Baking Coating							
Interior	Stainless Steel Plate SUS304							
Inner Door	Tempered Glass							
Shelves	W435×D435×H11 mm(4Shelves Standard)							
Temperature Control	PID Control							
Temperature Range	Ambient +5℃～50.0℃							
Temperature Control Accuracy	±0.1℃(During sterilization:±3℃)							
Temperature Uniformity	±0.3℃(During sterilization:±3℃)							
Sterilization Temp.	50.0℃～140.0℃							
Sterilization Time	0.1～10. hours							
CO2 Sensor	T/C		IR		T/C		IR	
CO2 Control Range	0.0%～20.0%							
CO2 Control Accuracy	±0.1%							
O2 Sensor	—				Galvanic Battery			
O2 Control Range	—				2.0%～80.0%			
O2 Control Accuracy	—				±0.5%			
Humidity	95%±0.4%RH							
Humidity System	Natural Evaporation(Humidity Pan)							
Safety Function/Alarms	Safety Cut-off/Alarm:Temp.,CO2, O2							
Rated Current	AC100-120V 10A(Max.) / 200-240V 5A(Max.)50Hz / 60Hz							
Power Consumption	1000W(Max.)							
Weight	85Kg							
Option	Analog Output,Alarm Contact Output,Gas Guard,HEPA Filter Kit							

CPI / CPM-475

Model	CPI-475		CPI-475R		CPM-475		CPM-475	
Exterior dimensions(W x D x H)	W817(32.2)×D752(29.6)×H1424(56.1) mm(in.)*							
Inner Chamber Dimensions(W x D x H)	W701(27.6)×D594(23.4)×H1145(45.1) mm(in.)							
Capacity	475L (16.8ft³)							
Exterior	Bonderized Steel Plate with Electrostatic Baking Coating							
Interior	Stainless Steel Plate SUS304							
Inner Door	Tempered Glass							
Shelves	W620×D546×H11 mm(14Shelves Standard)							
Temperature Control	PID Control							
Temperature Range	Ambient +5℃～50.0℃							
Temperature Control Accuracy	±0.1℃(During sterilization:±3℃)							
Temperature Uniformity	±0.5℃(During sterilization:±10℃)							
Sterilization Temp.	50.0℃～140.0℃							
Sterilization Time	0.1～10.0 hours							
CO2 Sensor	T/C		IR		T/C		IR	
CO2 Control Range	0.0%～20.0%							
CO2 Control Accuracy	±0.2%							
O2 Sensor	—				Galvanic Battery			
O2 Control Range	—				3.0%～80.0%			
O2 Control Accuracy	—				±0.5%			
Humidity	85% RH or more							
Humidity System	Natural Evaporation(Humidity Pan)							
Safety Function/Alarms	Safety Cut-off/Alarm:Temp.,CO2, O2							
Rated Current	AC100-120V 13A(Max.) / 200-240V 6.4A(Max.)50Hz / 60Hz							
Power Consumption	1300W(Max.)							
Weight	150Kg							
Option	Analog Output,Alarm Contact Output,Gas Guard,HEPA Filter Kit							

*Projection portion excluded

※The specification may change without prior notice.
The specifications are based on our criteria.



Introducing our
Optimized & Renovated
Premium Class CPI/CPM
Box Type Incubator Series

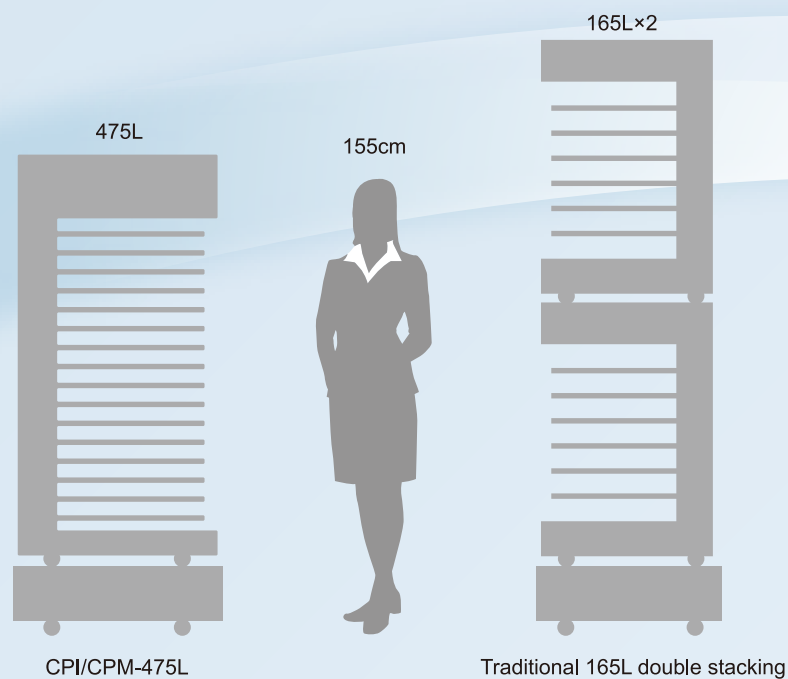


ASTEC CO LTD (HQ), Fukuoka, Japan
Astec-japan@astec-bio.com

ASTEC Korea, Seoul, South Korea
info@asteckorea.com

Shanghai ASTEC Biotech, Shanghai, China
info@china-astec-bio.com

ASTEC BIO USA, Hingham, MA, USA
astecbioua@gmail.com



Inner Glass Doors (GAW-165DH) for extra security and Limited Access Windows for preserving the gas levels and temperature inside.

Stackable feature is available for all our CO2 incubators. Saving precious lab space is essential in planning layouts in your current labs and preparing for possible future expansions.



Having designed incubators with customers in mind, an alarm system connectivity for external monitoring devices is standard for all our incubators. The system helps maintain the user-defined parameters and monitor the optimal environment for cell culture. Standard access port in the back provides the possibility to expand your application by adding other implementations to your culture.

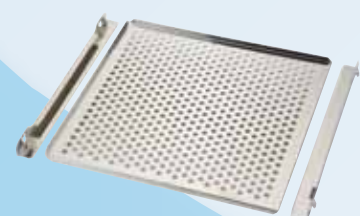


High quality and Durable 304, polished, corrosion free stainless steel is used for the chambers and our interior components. "Tool free" removal of all interior parts and accessories makes cleaning your incubator easier than ever!



Double Glass Doors on Large Capacity 475Lit unit

Shelves and Shelf Brackets



Shelves made of stainless steel, sturdy with a smooth surface. Shelf brackets come in a set of two and are easy to install.

Shelf: 165001
Shelf Brackets: 165002(2/set)

Filter Kit



IF-200

The Optional 0.3μ glass paper air dust filters capture dust particles and fungus spores circulating in the chamber, reducing the risk of contamination.

Replacement Air Dust Filter: IF-15

Gas Pressure Regulator



IM-055

Dual-stage regulator with easy-to-read indicators, optimum for use with an incubator. Easy fine adjustment in the low-pressure range.

Primary pressure gauge 0~25Mpa
Secondary pressure gauge 0~0.3Mpa

Incubator Pedestals

IM-011 / IM-033 / IM-475STD

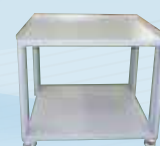
Incubators can be secured on stable, movable pedestals with casters. Brackets for securing the pedestal onto the floor or wall are also available.



IM-475STD
W877xD684xH365mm



IM-033
W700xD635xH150mm



IM-011
W700xD635xH600mm



USB interface for data and error log transfer.



User friendly, large LCD touch screen interface to ensure that the incubator is under control with a standard data logging system built in.



Setup automatic overnight dry heat sterilization with just a few clicks to minimize the risk of contamination.